



20 April 2017

To: Users of The Broker's Workstation and/or The Underwriter's Workstation

Dear Valued Client:

## Re: The Broker's Workstation and The Underwriter's Workstation – Important Releases and Changes

Custom Software Solutions Inc. (CSSI) is pleased to announce the release of the following enhancements and newest features to **The Broker's Workstation (TBW)** and **The Underwriter's Workstation (TUW)**:

### *Contents*

---

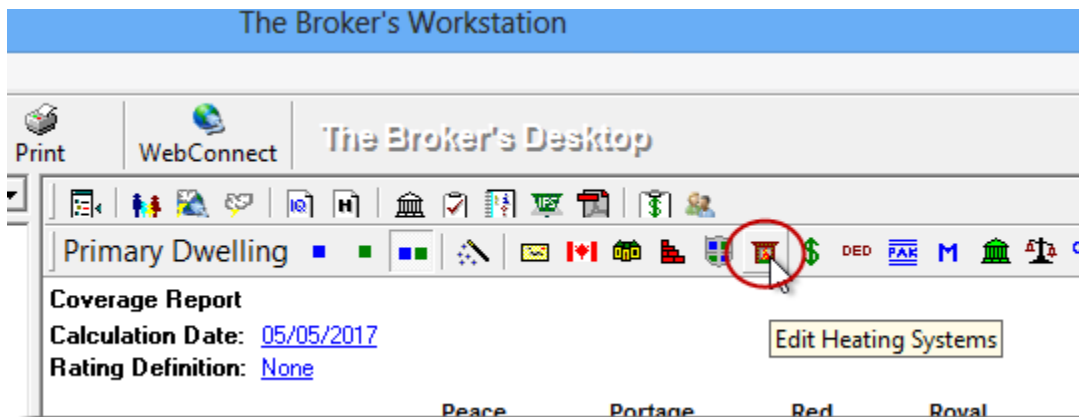
1. [Additional Oil Tank Details in Heating Systems Dialog](#) – The Oil Tank section in the Heating Systems dialog has been improved with additional options, including Manufacturer and Model drop-down menus.

## 1. Additional Oil Tank Details in Heating Systems Dialog

The Oil Tank section in the Heating Systems dialog has been improved with additional options, including Manufacturer and Model drop-down menus. These additional options can be used to add further oil tank details for new or existing habitational IntelliQuotes with oil heating systems.

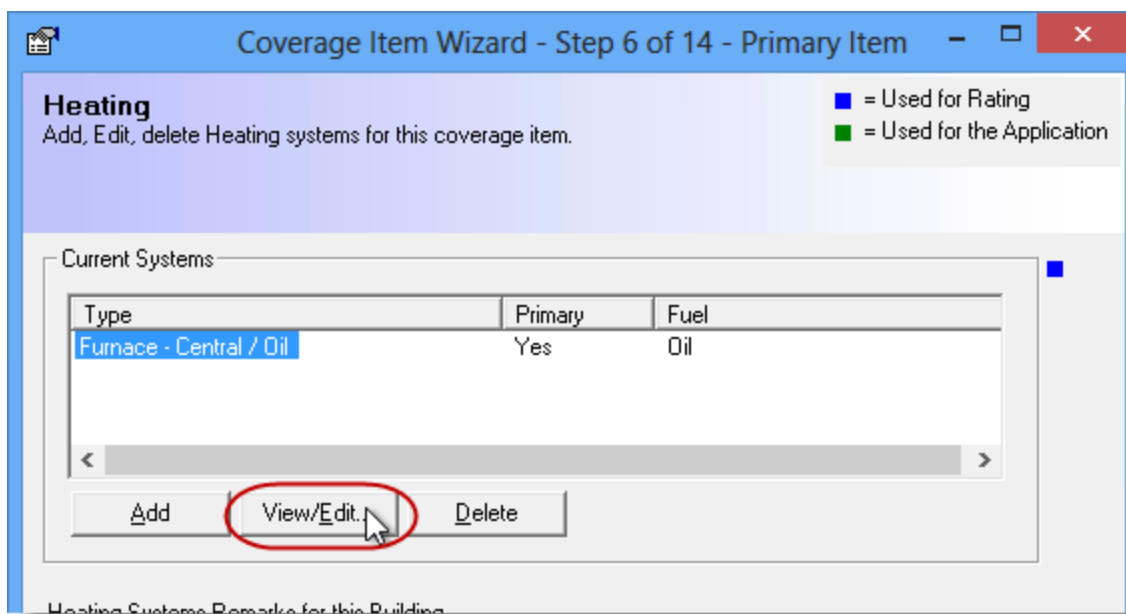
When you are creating a new habitational IntelliQuote, the Heating Systems step will display automatically as part of the workflow. For an existing IQ, access the Heating tab in the Coverage Item Wizard by clicking the **Edit Heating Systems** button on the IQ toolbar (see Figure 1.1).

(Figure 1.1)



In the **Heating** step/tab in the Coverage Item Wizard, click the **Add** button to add a new oil heating system for the property, or click **View/Edit** to modify the selected current system (see Figure 1.2).

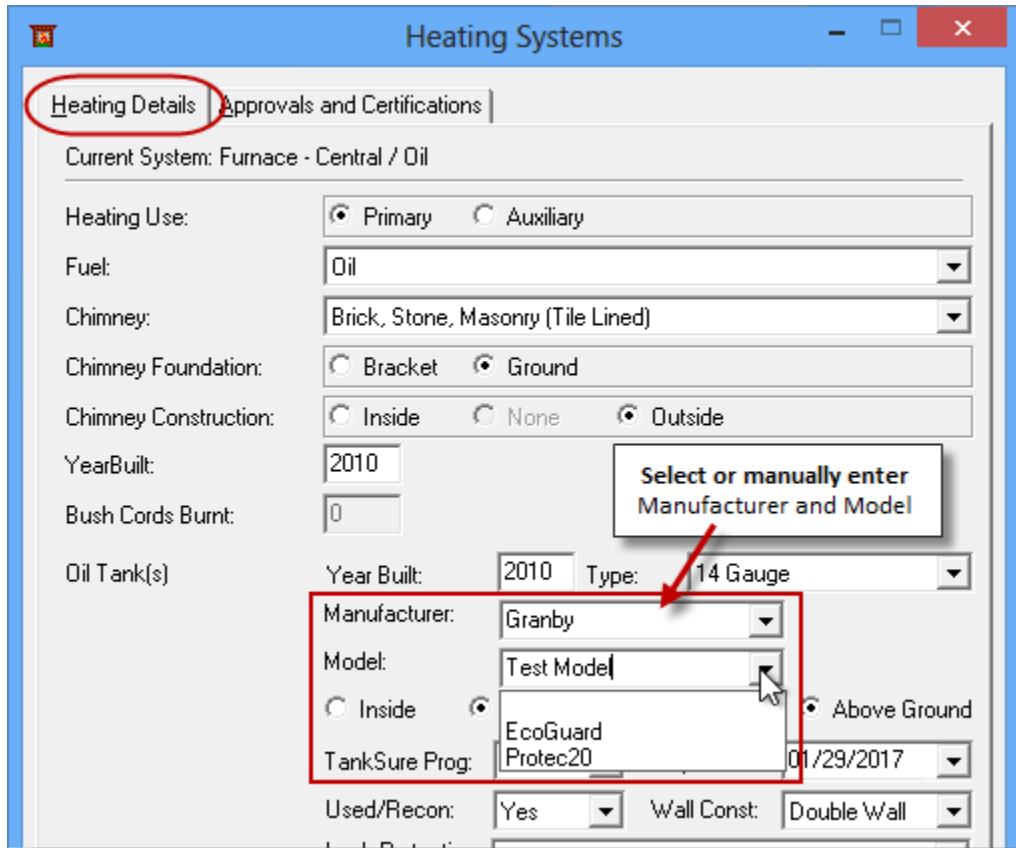
(Figure 1.2)



The **Heating Systems** dialog will display. In the **Oil Tank(s)** section on the **Heating Details** tab, enter requested details, noting the following additions:

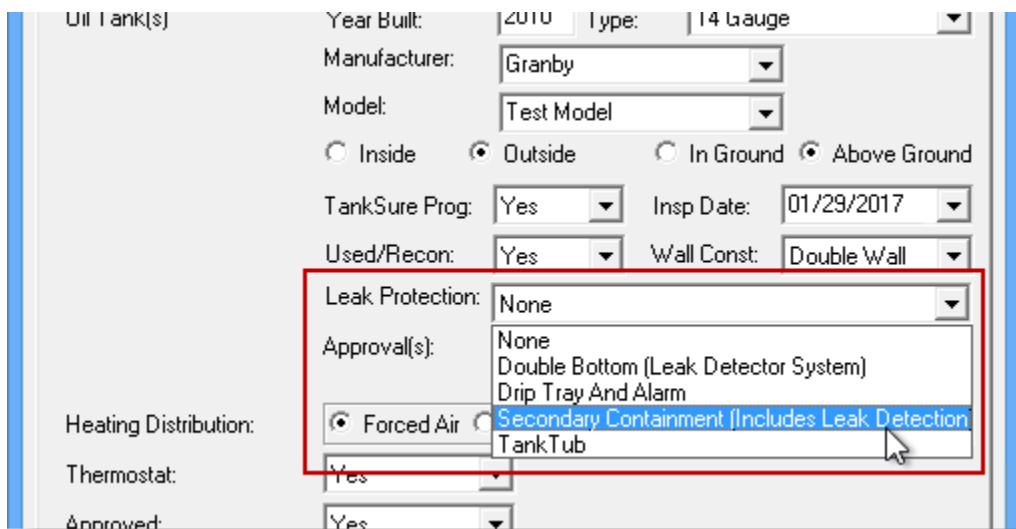
- In the **Manufacturer** and **Model** menus, either select or manually enter the applicable information for the oil tank for the oil heating system (see Figure 1.3).

(Figure 1.3)



- In the **Leak Protection** menu, two additional options are available for selection: *Secondary Containment (Includes Leak Detection)* and *Tank Tub* (see Figure 1.4).

(Figure 1.4)



[Return to Contents](#)

Please share this information with the appropriate TBW and TUW users in your office(s). Once you have reviewed this document, if you have any questions regarding these features or need further assistance in their usage, please contact our Client Services Team at [clientservices@cssionline.com](mailto:clientservices@cssionline.com) (email) or 1-888-291-3588 (toll-free telephone).

Thank you for using The Broker's Workstation and The Underwriter's Workstation.

Yours sincerely,

Custom Software Solutions Inc.



**Microsoft** Partner

Gold Independent Software Vendor (ISV)

*To unsubscribe from our email notifications and updates, please contact us at [info@cssionline.com](mailto:info@cssionline.com) or reply to this email.*