



1 May 2014

To: Users of The Broker's Workstation and/or The Underwriter's Workstation

Dear Valued Client:

Re: The Broker's Workstation and The Underwriter's Workstation – Important Releases and Changes

Custom Software Solutions Inc. (CSSI) is pleased to announce the release of the following enhancement to **The Broker's Workstation (TBW)** and **The Underwriter's Workstation (TUW)**:

Contents

1. [Hail, Wind, and Water Endorsements automatically added for Intact/Novex](#) – The mandatory hail, wind, and water coverage endorsements will now be added automatically in TBW for homeowners, additional residence (home), and seasonal broad policies with Intact/Novex.

1. Hail, Wind, and Water Endorsements automatically added for Intact/Novex

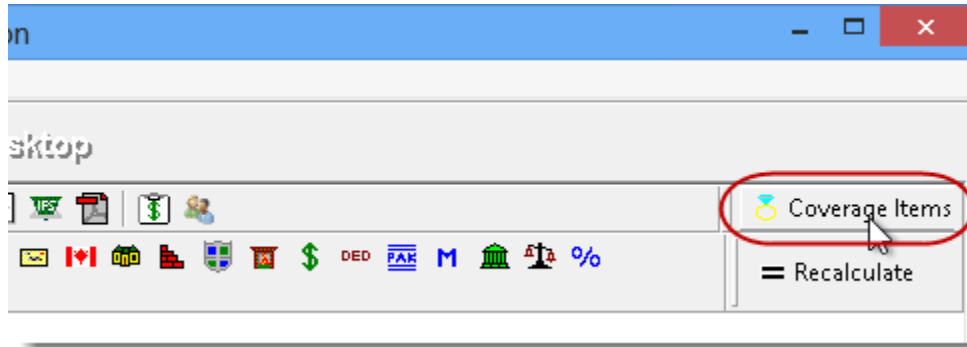
The mandatory hail, wind, and water endorsements will now be added automatically in TBW for homeowners, additional residence (home), and seasonal broad policies with Intact/Novex.

In Ontario and the Maritime provinces, this enhancement was introduced with their home improvement program effective March 31, 2014.

In BC, AB, and MB, this enhancement has been backdated to June 2013. For brokers in BC, AB, and MB, please note that **the water coverage endorsement, along with acceptable deductibles and coverage limits, must still be added manually.** Also, while the hail and wind endorsement will be

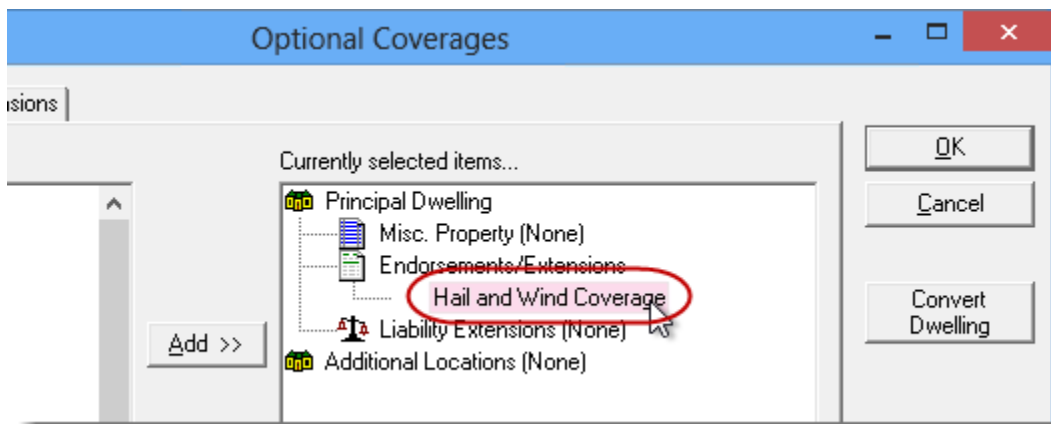
added automatically, **you are still required to enter applicable deductibles and coverage limits in TBW**. To enter deductibles and limits for this endorsement, click the **Coverage Items** button on the IQ toolbar (see Figure 1.1).

(Figure 1.1)



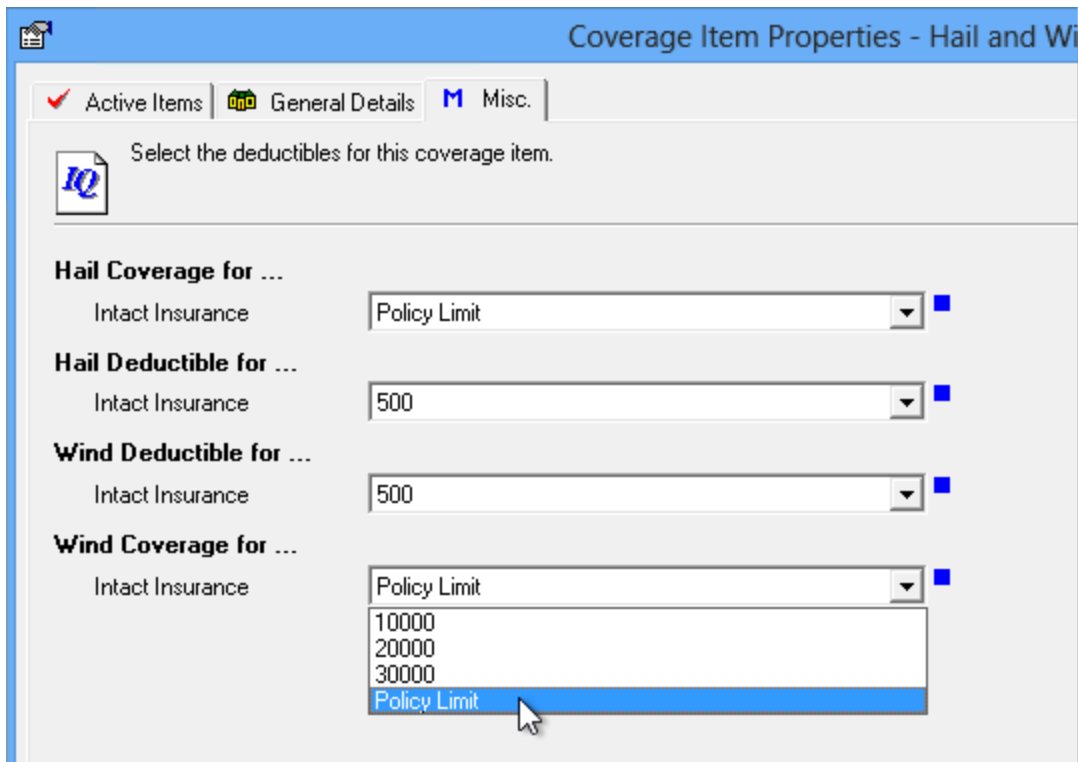
Then, in the **Optional Coverages** dialog, double-click the applicable endorsement (see Figure 1.2).

(Figure 1.2)



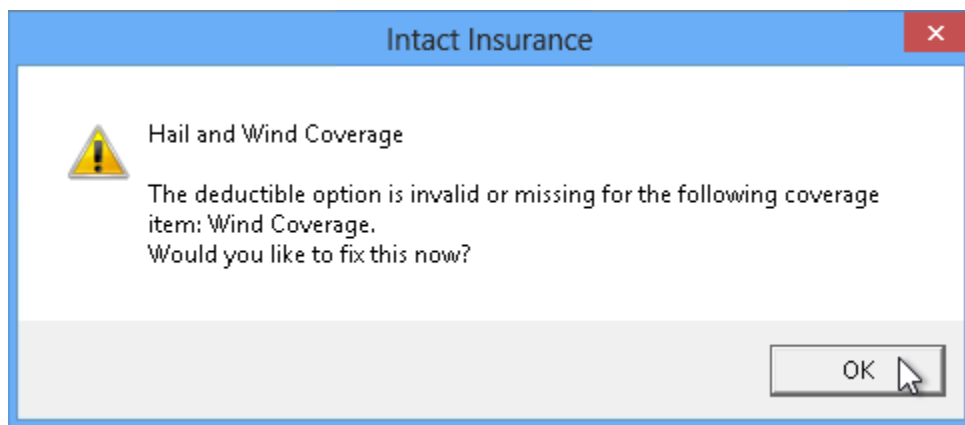
Enter/select appropriate details for coverage limits and deductibles in the **Coverage Item Properties** dialog (see Figure 1.3), and then click OK.

(Figure 1.3)



If any mandatory details for the coverage item have not been entered, you will be prompted to add this information (see Figure 1.4). The **Alerts** tab in the IntelliQuote will also provide details about any required information that has not been added.

(Figure 1.4)



[Return to Contents](#)

Please share this information with the appropriate TBW and TUW users in your office(s). Once you have reviewed this document, if you have any questions regarding this feature or need further assistance in its usage, please contact our Client Services Team at clientservices@cssionline.com (email) or 1-888-291-3588 (toll-free telephone).

Thank you for using The Broker's Workstation and The Underwriter's Workstation.

Yours sincerely,

Custom Software Solutions Inc.



Microsoft Partner

Gold Independent Software Vendor (ISV)