



January 25, 2008

To: The Broker's Workstation Users

Dear Valued Client:

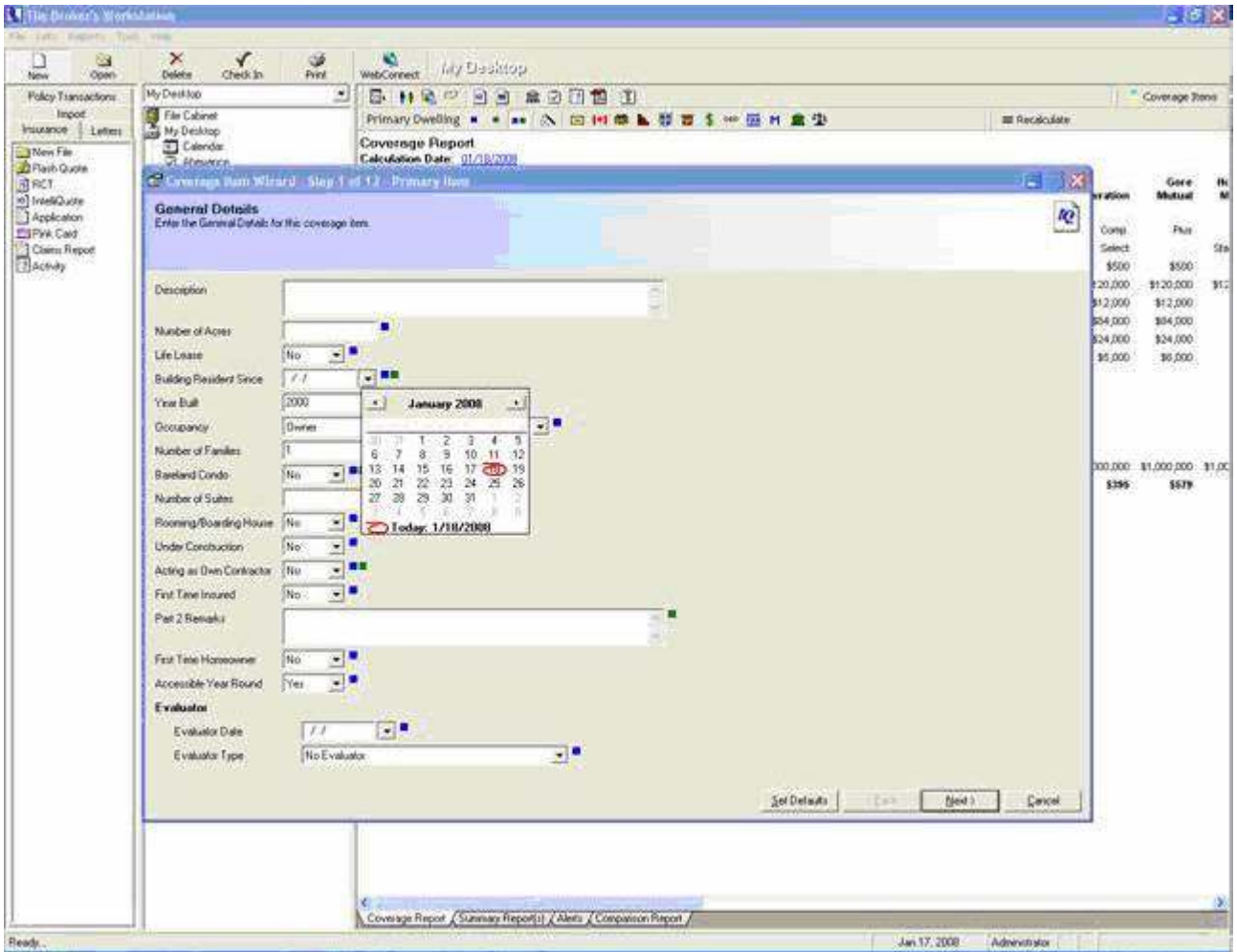
Re: New Date Control Feature

TBW Users have been requesting an alternative way to enter dates into TBW by utilizing a Calendar option. We are pleased to announce the development of a custom date control that combines TBW's existing Date entry box with the Windows Date control. Date entry fields now have drop down option where a User can pick the date from calendar or as in the past the User still has the option of typing in the date. (Figure 1)

Figure 1



297 Nelson St. W. P.O. Box 639 Virden, MB, R0M 2C0
Tel: 204-748-4800, 1-888-291-3588 Fax: 204-748-4806
www.cssionline.com



The User can navigate the control without the mouse. The following table (figure 2) describes the different actions a User can perform while the dropdown calendar is displayed. To display the calendar without the mouse click either the **F4** or the **Down Arrow** Key when in the Date entry box.

Figure 2

Key	Description
LEFT ARROW	Selects the next day
RIGHT ARROW	Selects the previous day
UP ARROW	Selects the same day of week in the previous week
DOWN ARROW	Selects the same day of week in the next week
PAGE UP	Scrolls the display to past months.
PAGE DOWN	Scrolls the display to future months.

Custom Software
SOLUTIONS INC.

297 Nelson St. W. P.O. Box 639 Virden, MB, R0M 2C0
Tel: 204-748-4800, 1-888-291-3588 Fax: 204-748-4806
www.cssionline.com

CTRL+PAGE UP	Scrolls the display to the previous year.
CTRL+PAGE DOWN	Scrolls the display to the next year.

Please run the TBW Remote Update Utility to access these changes. For assistance in using these new features, please contact our Support Team at 1-888-291-3588.

Please share this information with all TBW users in your office(s) and thank you for using TBW.

Yours truly,

Custom Software Solutions Inc.



297 Nelson St. W. P.O. Box 639 Virden, MB, R0M 2C0
Tel: 204-748-4800, 1-888-291-3588 Fax: 204-748-4806
www.cssionline.com